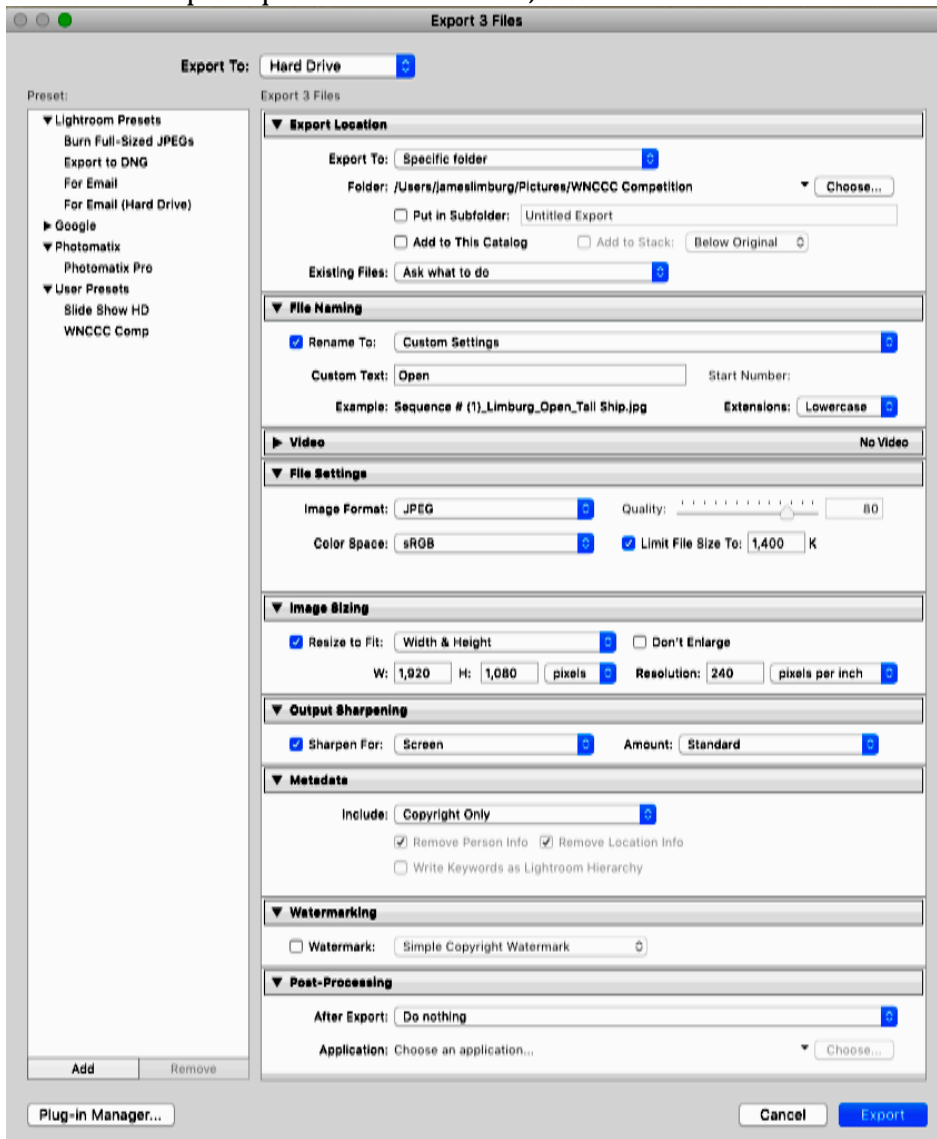


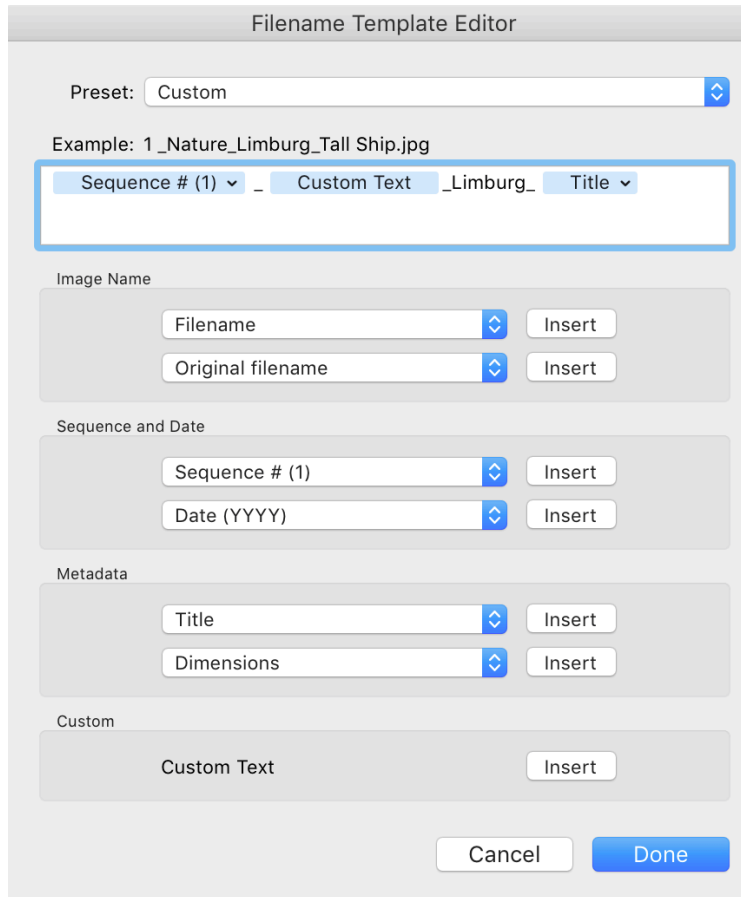
## Changing the Size of Images for WNCCC Competition

### LIGHTROOM

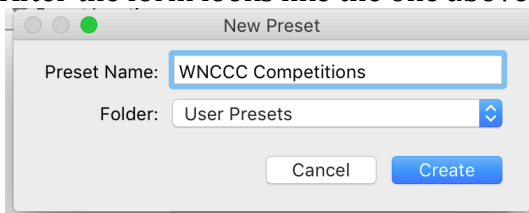
1. Add titles to the images that you are going to submit for competition to the Metadata of the Library module.
2. Select the images for one of the categories (I.E. Open or Nature or Mono.) in the Grid mode or from the filmstrip at the bottom in the Library module.
3. From the main menu select **FILE>EXPORT**
4. Fill out the export questions as follows; Work each section one at a time.



5. Renaming Dialog: Select pull down menu and then **Edit...**
6. **Insert** or **type** entries until box look like:



7. In the Image Sizing section, select **Width & Height** option. Adjust the width to **1920**. If the height is larger than **1080** adjust the height to **1080**. Don't readjust the width.
8. Confirm that the image size is **1.4M or LESS**
9. After the form looks like the one above, click **ADD** (bottom Left) to save as a preset.



Click **Create**.

10. Click **EXPORT**.

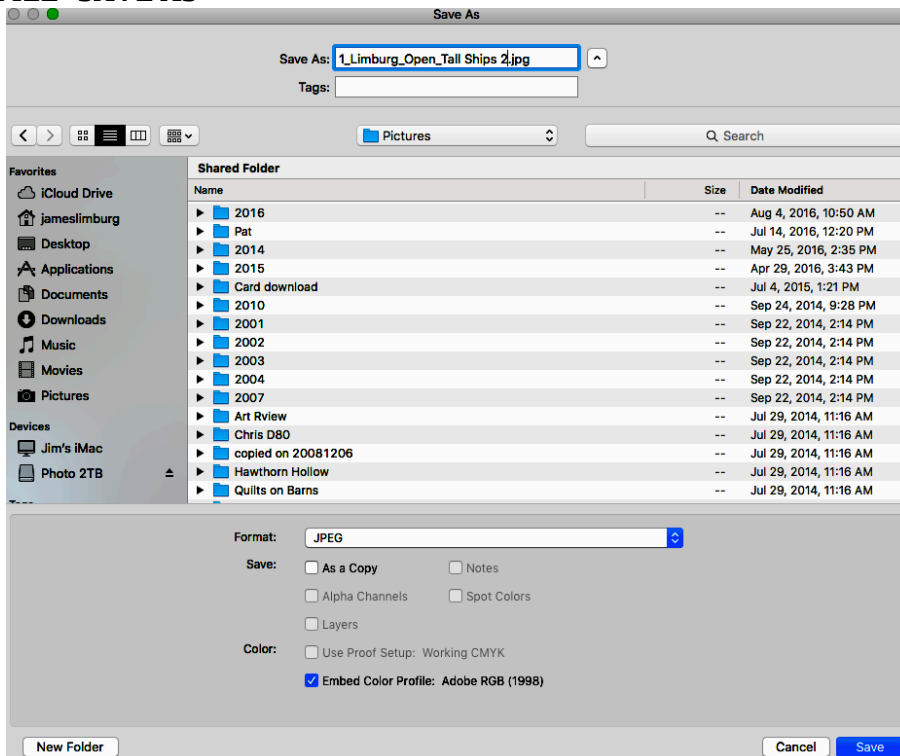
## PHOTOSHOP

1. **FILE>OPEN** finished image in Photoshop.
2. **IMAGE> IMAGE SIZE**
3. Choose the units to be **PIXELS**

- Adjust the width to **1920**



- If the height is larger than **1080** adjust the height to **1080**. Don't readjust the width.
- Confirm that the image size is **1.4M or LESS**
- FILE>SAVE AS**

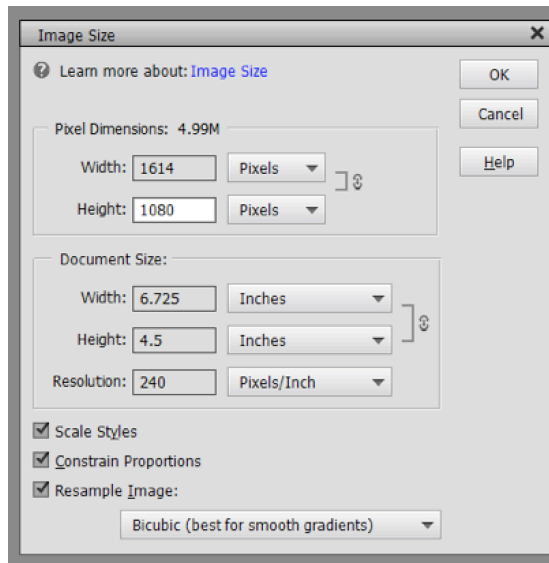


- 
- 
- 
- 
- 
- 
- 
- 
- Type the file name in the required format: **1\_YourLastName\_Open\_Title.jpg**
- Select the location to save the final resized image.
- Select format as JPEG.
- Click **SAVE**

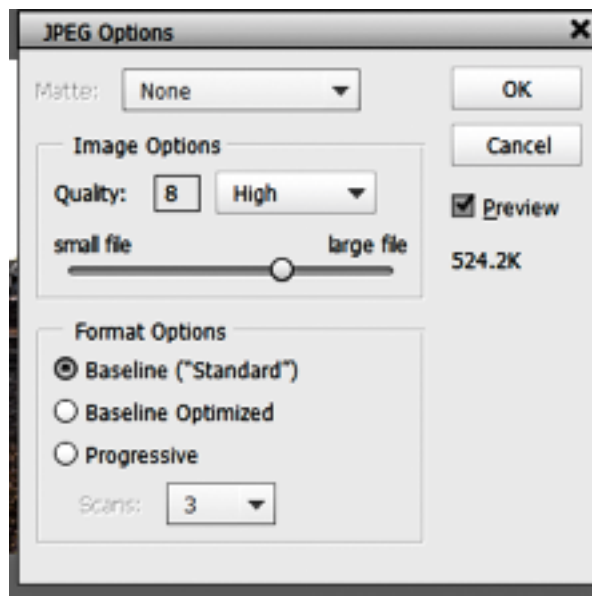
## ELEMENTS

- Open file
- IMAGE>RESIZE>IMAGE SIZE**

3. Select Resample. Automatic or Bicubic is OK.



4. Select pixels as the Units in upper box. Don't worry about Document Size.
5. Set width to **1920 pixels**.
6. **IF** the height is greater than 1080, set the width to **1080**. Do not reset the height.
7. **FILE>SAVE AS**
8. Type name as per the WNCCC guidelines. (example: 1\_YourName\_Open\_title.jpg)
9. Select a folder to put the image into. Somewhere that you can find it.
10. Save as type: **JPG**. JPG Options: **QUALITY: 8** or High



11. Check to be sure that the file size is smaller than 1.4M or 1,400K
12. Click **OK**